



GCFRCB ORGANISATION'S
UPANU INSTITUTE OF GLOBAL HEALTH

POST GRADUATE DIPLOMA IN

**PUBLIC HEALTH
ADMINISTRATION**

12 MONTHS



ABOUT GCFORCB ORGANISATION

Global Centre for Capacity Building (GCFORCB) Organisation is a Public Health Non- profits capacity building organisation, dedicated to improving health facilities and human resources. Our work saves lives and develops human resources and facilities skills. We improve joint operations, strengthen the infrastructure necessary to handle the growth that comes from our healthy promotive service initiatives, and develop the relationship between charities, corporations, foundations, and government, gcforc b Organisation is a public-private initiative that has collaboratively evolved through consultations with multiple constituencies including Indian and international academia, central and state governments, multi & bi-lateral agencies, and civil society groups.

“
One of the most
important, not skills, but
the prerequisite for the
global health workforce is
the possession of values.
He or she should be
committed to the public
good



DR. ANGIKA SINGH
Founder Director

ABOUT UIGH

The UPANU Institute of Global Health (UIGH) is focused on public health management in India. Founded with a vision to develop public health professionals empowered with the knowledge, skills, expertise, and public health ethics. Our Philosophy is to enable future leaders in Public Health to understand, implement and evaluate local solutions to India's enduring public health and governance challenges. Its unique format of being asset-light and talent-heavy has resulted in a compact but classy campus accommodating a class of 40 scholars in the UIGH Institutional Area in Ranchi, Jharkhand, and Solapur, Maharashtra the public health hub of our country.



DR RAJENDRA AWATE
ACADEMIC DIRECTOR AND DEAN

“
The number and quality of the applicants in our very first year has convinced us that the Indian youth wants to have a decisive say in the society they want to live and work in
”

ABOUT THE COURSE

The public health administration is a pillar of public health practice, along with project management, health care policy, behavioral sciences and grant seeking, monitoring, evaluation and learning, public health innovation, and global health; through effective management, research, theory, and scientific innovation can be translated into successful public health action.

The National Health Policy 2017 of the Government of India, section 11.8 recommends the creation of a "Public Health Management Cadre in all States based on public health or related disciplines, as an entry criterion. The policy also advocates an appropriate career structure and recruitment policy to attract young and talented multidisciplinary professionals. Medical and health professionals would form a major part of this, but professionals coming in from diverse backgrounds such as sociology, economics, anthropology, nursing, hospital management, communications, etc. who have since undergone public health management training would also be considered.

Public health administrators are concerned with health and disease prevention programs. They administer educational campaigns and try to keep the people they serve healthy. Other health professionals have similar aims of maintaining health but often are restorative or curative rather than preventive.

COURSES WE OFFER

01

Post Graduate Diploma in Public Health Administration (PGDPHA): 1 Year

Certification Program on Comprehensive Primary Healthcare (CPCPHC): 6 Months

02

FLAGSHIP TRAINING PROGRAM

03

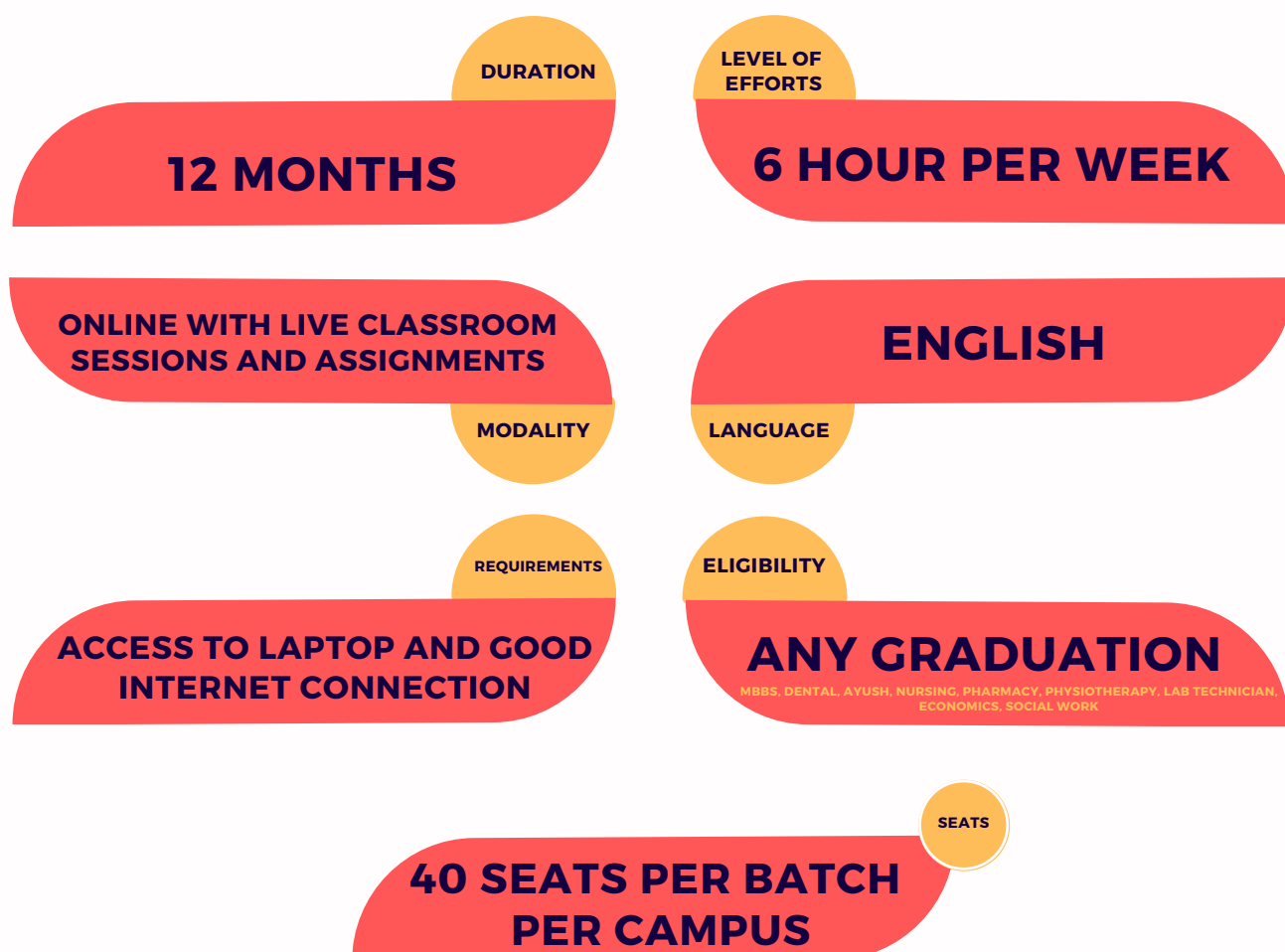
Post Graduate Program in Social Public Health (PGSPH)

ACADEMICS

UIGH trains its scholars to be leaders in the Public Health domain. As such, our scholars not only undergo a comprehensive academic program in Public Health Management but are also rigorously trained in management, communication, and leadership skills.

$$\begin{aligned} &\text{Strategic Management \& Communication Skills} \\ &+ \\ &\text{Professional Development \& Public Health Knowledge} \\ &+ \\ &\text{Industry \& Project Management Landscape Exposure} \\ &= \\ &\text{UIGH Graduate} \end{aligned}$$

Over the course of our Public Health program, all scholars will be trained in a wide range of public Health Management subjects, namely – Project Management, Organizational behavior, Grant Seeking, Public Health Policy, Research Methodology, Public Health Ethics, Global Health, and Leadership Skills, Comprehensive Primary Healthcare, etc.



UNIQUE FEATURES

- **Practitioners' lens:** developed and facilitated by public Health industry practitioners & experts
- **Multi-sectoral perspective:** uses case studies & real-time examples from different projects
- **Real-time examples:** application-based interactive learning through classroom activities
- **Context-specific:** builds critical perspective for the global public health
- **Mixed method approach:** uses hands-on tools and approaches from quantitative and qualitative perspectives
- **Hybrid model, blended curriculum:** tailored for early career professionals with evening/weekend classes

SPECIAL FEATURES

- No Cost EMI Available
- Access to Free digital Library with over 1000 Public Health Books
- Lifetime subscription to our weekly Newsletter on latest public health issues: Indian Public Health Now.
- Access to our upcoming Podcasts Ujaagar, where you can learn from different public health experts from all over the globe.
- Up to 10% discount on PubEdu training models for 25,000 INR worth of courses

PROGRAM HIGHLIGHTS

CERTIFICATE FROM UPANU INSTITUTE OF GLOBAL HEALTH



Opportunity to earn a certificate of completion in PGDPHA from the Indian GCFORCB Organisation's UIGH. Credit sharing from Martin Luther Christian University, Shilong, Meghalaya.

EVENING ONLINE & INTERACTIVE CLASSES



Classes are held in the evening so that learning and work can be managed together and it's easy for working professionals to attend lectures.

BLENDED LEARNING PEDAGOGY



Learn from the Multi-disciplinary Public Health industry expertise faculty and Classes by highly qualified Public Health Practitioners.



PUBLIC HEALTH INDUSTRY FACULTY PANEL

A focus on transformational learning, skills-based curriculum, and global health community connect

KEY INDUSTRY ENGAGEMENT INITIATIVES



Public Health Open Mic, Public Health Boot Camps, Virtual Meetings/workshops/CPHE (Continuing Public Health Education), Public Health Podcast, Public Health Coffee Table, Experiential Learning, Transect Walk & Story-telling, and Newsletters.



MODULAR LEARNING OUTCOMES

PUBLIC HEALTH PROJECT MANAGEMENT

CREDITS 04

Identifying their roles and responsibilities as a Project Manager and developing a deeper understanding of PPP model. Ability to conduct needs assessment, project budgeting, reporting and monitoring, and evaluation.

CREDITS 03

ORGANISATIONAL PROCESS

Ability to conduct oneself in different organisational setting. Use of emotion and Emotional intelligence as a managerial tool for Leadership, Individual, Group, and Management.

SCIENTIFIC WRITING AND RESEARCH METHODS

CREDITS 03

To be able to understand the art behind grant seeking and conducting research and statistical analysis How to conduct impact evaluation

CREDITS 04

GLOBAL HEALTH

Understanding of health policy and economics What is the public health administration and community health care in India to develop an understanding of Public Health Ethics and Leadership

PROJECT COMMUNICATION MANAGEMENT

CREDITS 03

Understanding Health and social advocacy Ability to excellence, planning and resources, organising and present the writing

CREDITS 03

PUBLIC HEALTH EVENT MANAGEMENT AND MASS CAMPAIGNS

Develop understanding of Legal framework ,communication and event detection. How to conduct event risk assessment, How to perform response measures and outcome measures.

FINANCIAL ANALYSIS FOR MANAGERS

CREDITS 02

Financial decision making and the techniques used in Financial Analysis Ratio analysis for financial statements Forecasting and Valuation

CREDITS 02

CONTRACT READING AND WRITING

Different forms of contract available contract closing process developing an understanding of arbitration act and standard forms of contract

HOW TO APPLY?



LAST DATE TO APPLY

15th December (Winter Batch) / 15th June (Summer Batch)

- The admissions process at UIGH is a simple one.
- If you meet the eligibility criteria, please apply by filling out the form by December 15 (Winter) and/or June 15 (Summer).
- Link for Online Application: <https://gcforcb.org/academics-programs/>

FEE STRUCTURE

1. For Indian Students:

- ₹ 1,50,000 with Placement Assistance
- ₹ 1,00,000 without Placement Assistance

2. For International Students: \$2582

This includes the tuition cost, study materials, and admission fees of the program.

Examination fees will be depending upon the university notification.

ASSESSMENT

The assessment process is intended to support the learning journey of the scholars and drive excellence. Assessment of the scholar's learning will be through a combination of:

- Class participation
- Graded individual and group assignments
- Quiz
- Term papers and examinations
- Peer assessment in collaborative groups
- Assessment by learning mentors
- Fieldwork or project work

PLACEMENT ASSISTANCE

- Placement Assistance will be given after completion of the training.
- The key endeavor of Placement Cell at UIGH: Ranchi GCFORCB Org is to facilitate the employability of the students, enrolled in the GCFORCB on-campus programs
- The UIGH placement cell supports the placement process by identifying relevant career opportunities for those seeking placement assistance.
- The placement cell provides a timely update to the enrolled candidates about available opportunities in other organizations of relevance.
- The UIGH placement cell will extend full support to students to assist them in the placements, however, the placement cell does not guarantee the final postings.
- The UIGH placement cell will provide information about available opportunities to the candidate. The enrolled candidates seeking placement assistance are expected to apply for the same. However, the final placement of the candidate depends upon the candidate's performance in the entire application and selection process.
- Every quarter, the UIGH placement cell also organizes a professional development workshop for the enrolled candidates, which includes sessions on resume writing/cover letter writing/ interview skills/ email etiquettes/ group discussion, etc. Those interested in the placements must attend these workshops and not miss any sessions.



CONTACT US

UIGH: RANCHI, JHARKHAND CAMPUS

GCFORCB Organisation's UPANU Institute of Global Health (UIGHR),

Shanti Jayanti Niwas, Tata Road, Behind Tiwari Dharm Kanta, Sidroul, Namkum,

Ranchi, Jharkhand-834010

Mobile: +91 9686164642 / +91 6392415104

Email: admissionuigh@gcforcb.org

Website: www.gcforcb.org

UIGH: SOLAPUR, MAHARASHTRA CAMPUS

GCFORCB Organisation's UPANU Institute of Global Health (UIGHS),

06, Narsimha Nagar, Near Water Tank Jule, Solapur, Maharashtra-413008

Mobile: +91 96071 35455 / +91 6392 - 415104

Email: info@gcforcb.org / career@gcforcb.org

Website: www.gcforcb.org



Global Centre *for*
Capacity Building

